

September 2022

Upcoming Events

See what's happening

FlashPoints Remote Training

(for FlashPoints Customers, only)

Tuesdays @ 10 am ET
Fridays @ 1 pm ET

Signup to request an invitation to a class at:
www.flash-soft.com/training.php

Even customers who have been using FlashPoints for years are encouraged to take the class to learn the latest FlashPoints tips, tricks, and features.



Don't Forget to **ENHANCE** your FlashPoints experience with **FlashPoints Survey!**

Available in the FlashPoints Store



It came from the Field!

We use the phrase "It's CAD, Your Way!" in our ads to describe FlashPoints. And nothing could be more accurate. FlashPoints is Computer-Assisted Drawing software (CAD). But more than that, it is software that works the way YOU do. We strive to make FlashPoints intuitive and easy to use. But as computer professionals, we cannot be out in the field with you guys. So we rely on your feedback and experience to help us make this YOUR software.

We monitor the Facebook Fire Suppression group and look forward to your "Find of the Day pictures" to keep us informed of your needs. We also appreciate the feedback and comments that we receive from each of you.

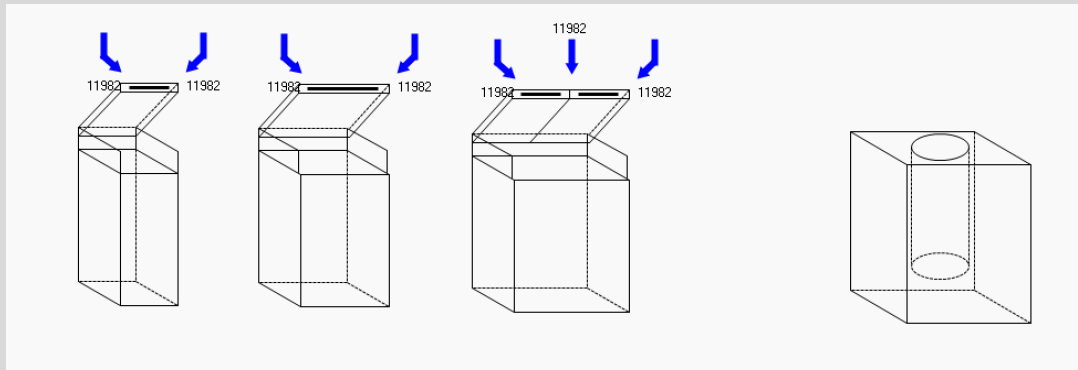
The newest version of FlashPoints contains some changes that were suggested by you, our customers. We have acknowledged those folks in the sections below. Please keep those suggestions coming so we can keep making FlashPoints - CAD, Your Way!

Denis & Ray

UPDATE TO VERSION 4.3.5.0, NOW!

Check ALL of your seats

Our Newest Appliances



Clamshell Griddle & Tandoor Oven

Two new appliances have been added to FlashPoints: Clamshell Griddle (found under GRIDDLE) and Tandoor Oven (found under CHARBROILER).

The Tandoor Oven is a simple appliance, but coverage is not specified in manufacturer manuals. You will need to check with your system manufacturer for the appropriate coverage.

The Clamshell Griddle is a new kind of griddle that has "pull-down" platens that allow a steak or burger to be cooked on both sides at the same time. After researching several versions of the clamshell griddle we used a unique method to provide added drawing flexibility. The default griddle is 13 inches wide. As the width is increased the griddle, and platen, increase in size. However, at each interval of 13 inches, FlashPoints will add another platen to the griddle. This allows you to quickly add additional platens by simply changing the width to 26, 39, 52 inches, etc. Widths in between these sizes will simply make the griddle and platens that are already displayed, wider.

Front, left, and right views are available for use. We have added default coverage "suggestions" for Ansul and Amerex to FlashPoints, please check with your manufacturers to ensure proper coverage.

We would like to thank Jamie Knowles from Amerex for bringing ClamShell Griddles to our attention when he mentioned them on the Inspect Point Podcast.

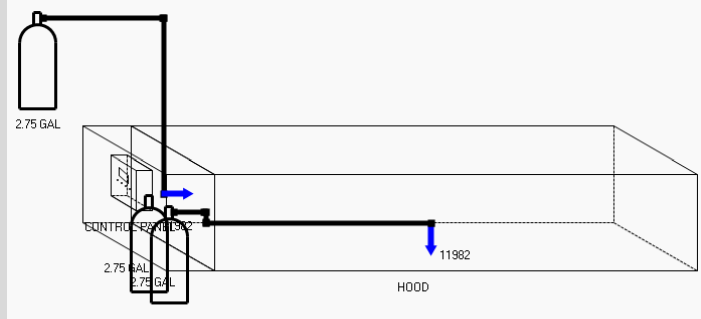
NEW Enhanced Cylinders

ENHANCED CYLINDERS

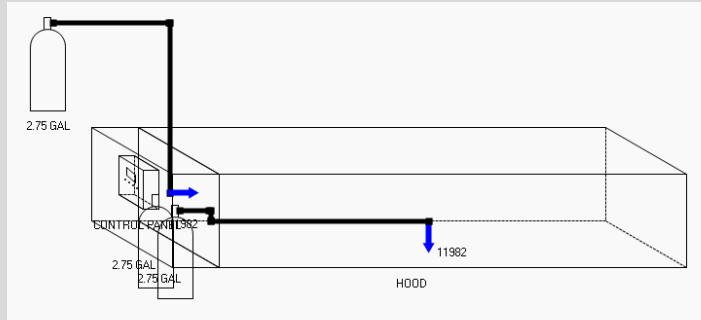
We received a suggestion to make the cylinders stand out in drawings so they could be found easily, especially in situations where the drawing becomes rather busy, like in the box at the end of a hood. To solve this we have created

"Enhanced Cylinders". Enhanced Cylinders are exactly the same as the cylinders you use now, but they are drawn with thicker lines.

We have turned on Enhanced Cylinders for everyone in the new version of FlashPoints so your fire marshal will not have to play "Where's Waldo" trying to find your cylinders. However, if you prefer to use the Traditional Cylinders, there is a checkbox on the SETTINGS screen that you can use to switch back.



TRADITIONAL CYLINDERS



THANK YOU to Eddie Hall at Pye-Barker Fire & Safety in South Carolina for this suggestion!

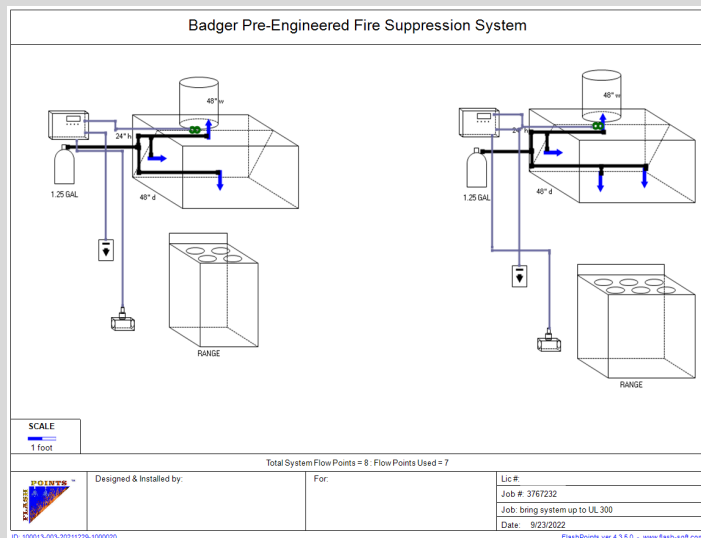
NEW Stamp Box Options

The STAMP box on drawings has been a thorn in our side since Day 1. We put it on the drawings at the request of our customers, but it has never made much sense to us. By their nature, pre-engineered system drawings do NOT require an engineer's stamp, yet some fire marshals continue to require them.

We have tried to remove the STAMP box in the past, but each time we do someone steps up and says they need it. Well, after a LOT of discussion we have come up with a solution. You can now choose to have the STAMP box on your drawings, or you can remove it and let the fields next to it fill that 1 inch of space.

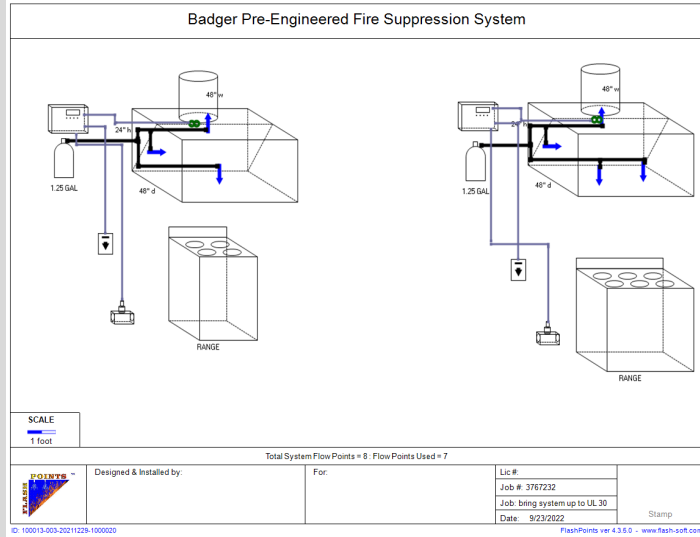
A check box on the SETTINGS screen will let you choose your default setting, but we have also added another check box to the JOB SETTINGS under the VIEW menu that will allow you to turn it

STAMP BOX - OFF



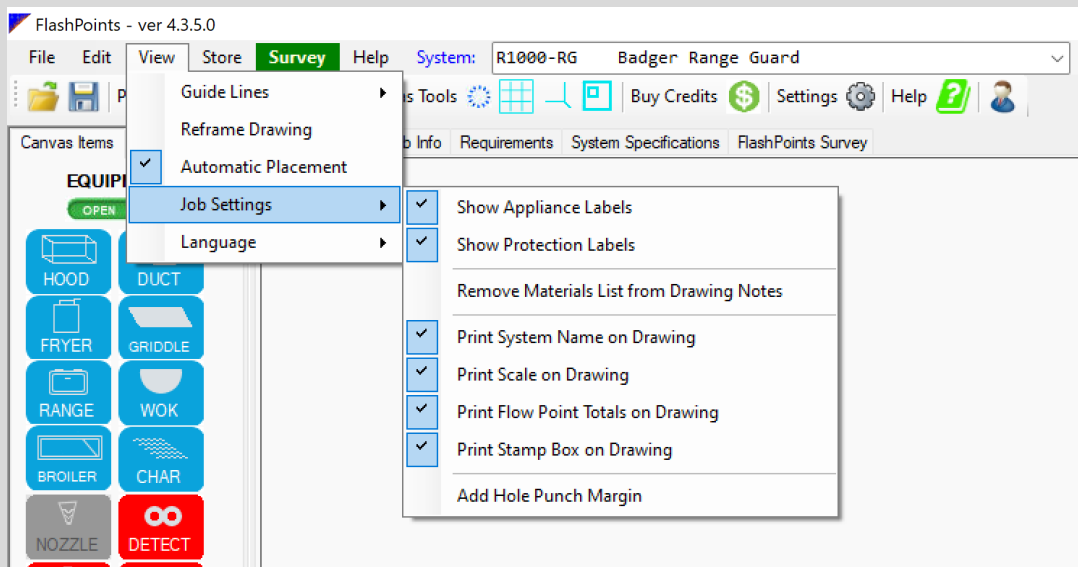
STAMP BOX - ON

on and off at the JOB level. You might turn it off for most jobs and turn it on for a single job. The JOB SETTINGS will be saved with the job.



THANK YOU to Todd Ladd from Unifour Fire & Safety in South Carolina for this suggestion!

NEW Job Settings



The Job Settings are a series of checkboxes that also exist on the SETTINGS screen. Now you can set them on the SETTINGS screen as defaults and forget about them. Each time you start a new job the Job Settings will be taken from the SETTINGS screen. BUT, if you want to override the settings at the job level, you can change them from the menu, as shown above. Changes made on the JOB SETTINGS menu only apply to the current job and will be saved with the job. This should reduce the need to keep switching over to SETTINGS make "one-off" settings changes.

FlashPoints Referral Program

As you refer FlashPoints to your friends,
remember to give them your FlashPoints referral code.

When they get FlashPoints,
they will get 2 extra credits and you will get 2 credits, also!

If you don't have your FlashPoints referral code,
send an email to support@flash-soft.com and we will send it to you.



Flash-Soft, Inc, | 231 Pulaski Blvd, Bellingham, MA 02019

[Unsubscribe support@flash-soft.com](#)

[Update Profile](#) | [Constant Contact Data
Notice](#)

Sent by support@flash-soft.com powered by



Try email marketing for free today!